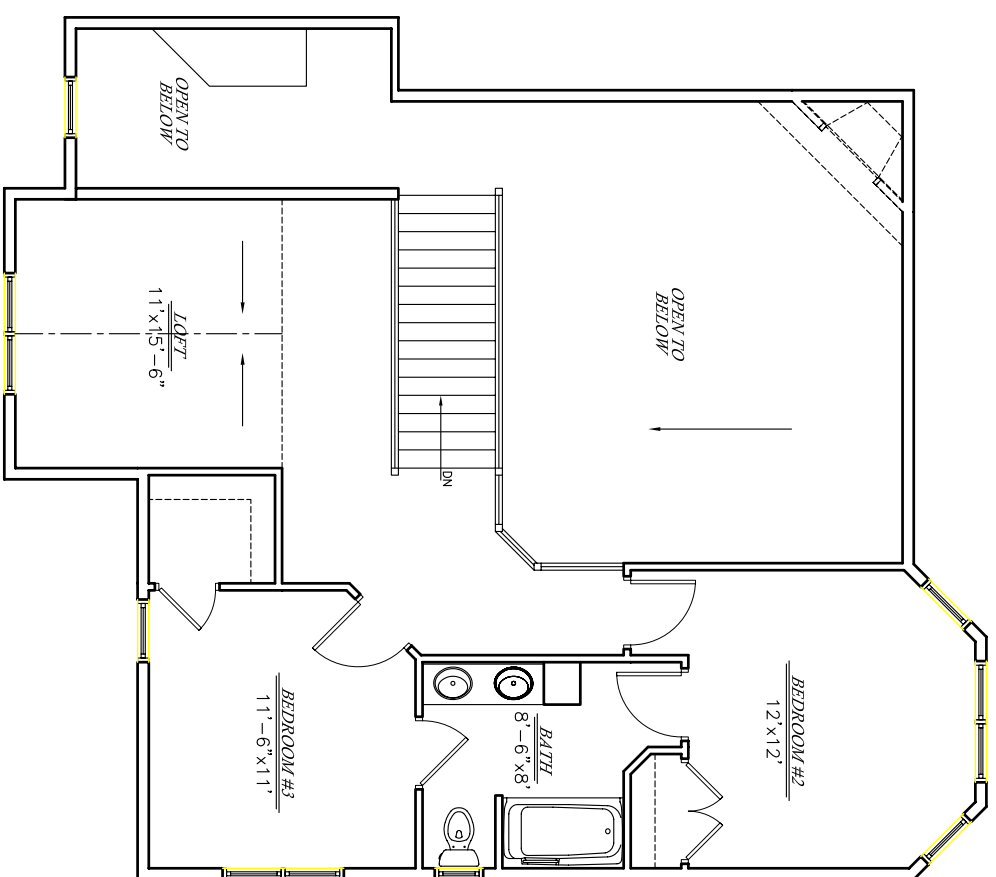
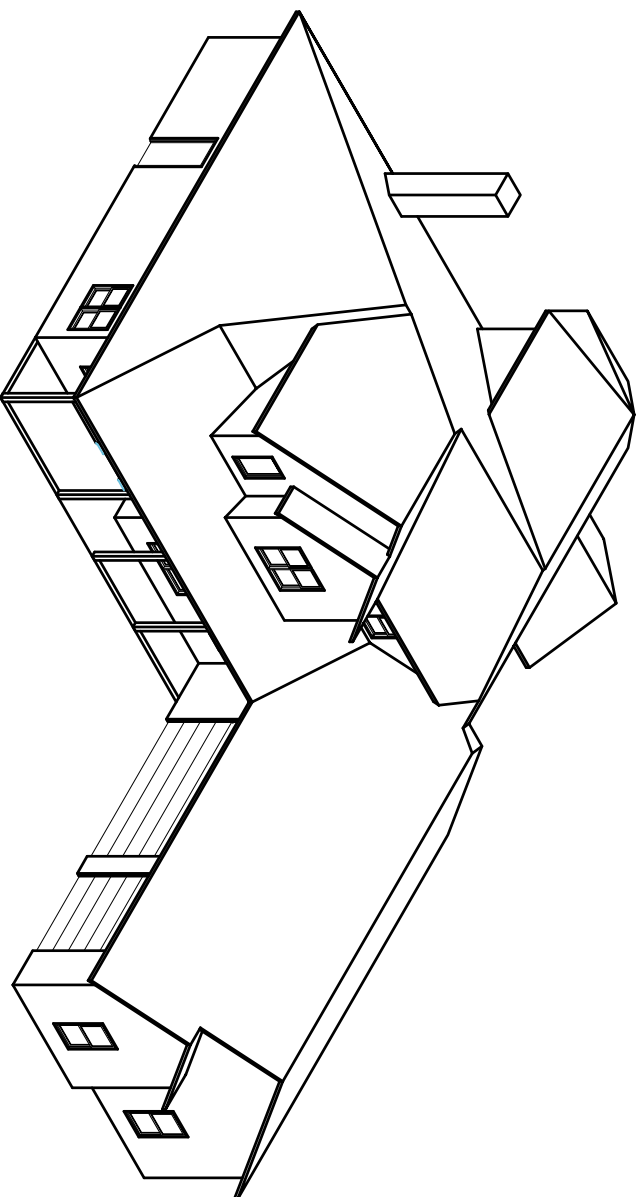
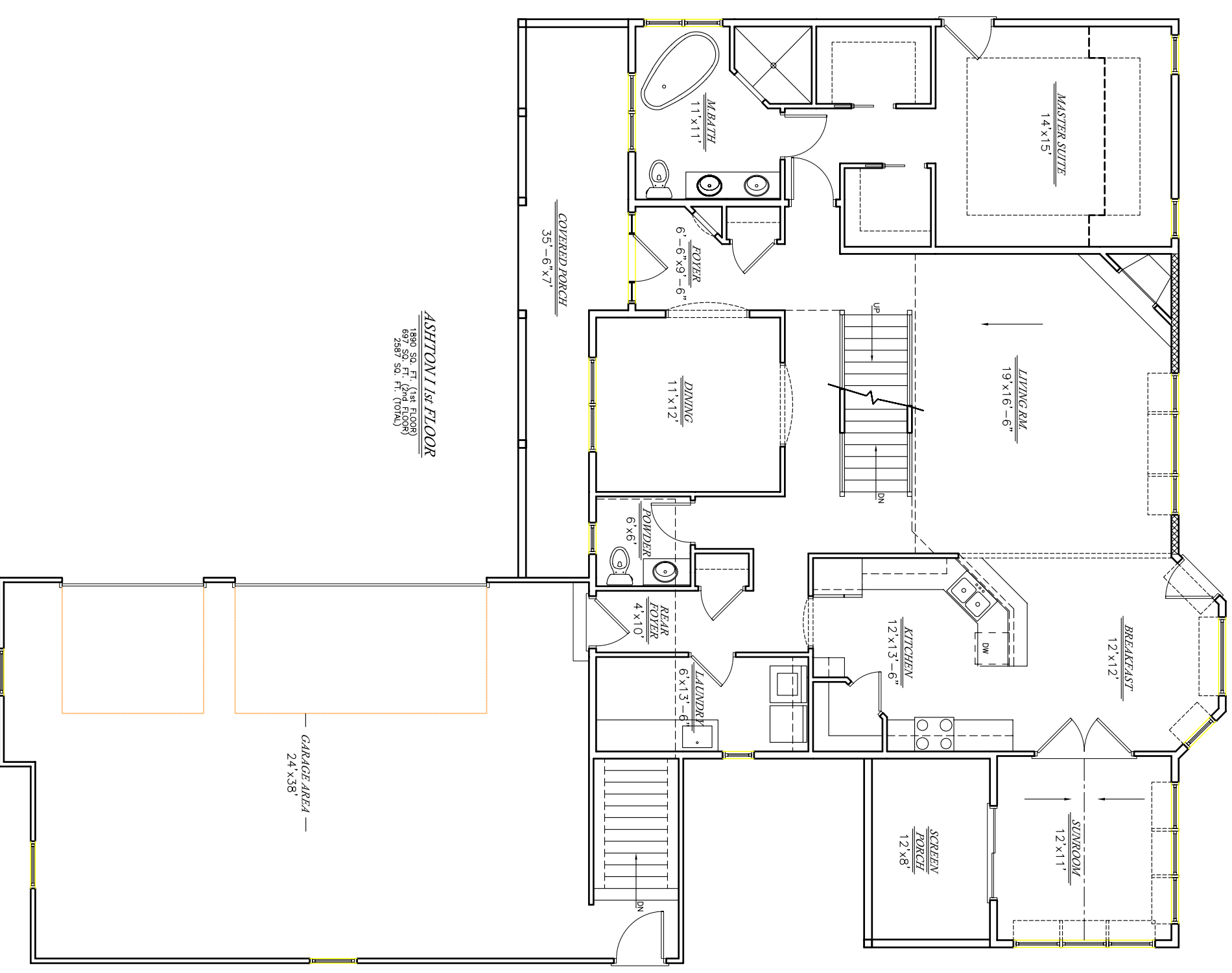


ASHTON I

**STORTZ**  
 CUSTOM HOMES, LLC  
 EXCEPTIONAL QUALITY, SUPERIOR SERVICE



ASHTON I 2nd FLOOR  
 880 SQ. FT. (144 FLOOR)  
 2887 SQ. FT. (TOTAL)



ASHTON I 1st FLOOR  
 880 SQ. FT. (144 FLOOR)  
 9287 SQ. FT. (TOTAL)

# ASHTON I

# ASHTON I

## Basement Features

- 9' Height, steel reinforced, solid concrete foundation
- Insulated per Wisconsin energy code
- Vinyl insulated basement windows (2)
- Shrink control joints in basement walls and floors
- Backfill and grading allowance per your building site
- Stairs to Basement from Garage

## Electric

- 200 amp service
- 3 Exterior waterproof outlets
- 4 Phone jacks
- 4 Cable TV outlets
- Generous light fixture allowance
- Electrical to Dryer and Range

## Structural Features

- 2" x 6", 16" on center exterior house walls
- 12" TJI Floor Joist
- 3/4" LP High Performance Floor
- 30-year, dimensional shingle roof
- 1/2" OSB Sheathing
- R-21 Blown Insulation in exterior walls
- R-50 in attic
- Floor Joist Ends Spray foamed for complete seal
- DuPont Tyvek Housewrap
- Marvin Integrity windows and patio doors
- Continuous ridge vent on roof
- Fiberglass insulated front entry door

## Interior Details

- Maple Raised Panel Cabinets Throughout
- Solid Maple 3-1/4" casing and 4-1/4" base
- 4-panel Maple Doors
- Beech Handrail, Newel Post, and Metal Balusters
- Tile Flooring in all Baths, Foyer, and Sunroom
- HW Floors in Kitchen, Breakfast, Dining, & Living Room
- Schlage hardware
- Mirrors over all vanities
- Lennox Superior BC 42" Natural/Gas Fireplace
- Generous fireplace facing Allowance
- Granite Countertops Throughout
- Carpet allowance of \$24/yd.
- Interior and Exterior painting
- Steel Garage Door 2" insulated (R10)
- (2) Belt Drive Openers with 2 controllers and 1 Keyless
- Rounded Corners
- Orange Peel Finish

## HVAC

- Rheem Classic® 90 Plus® High Efficiency Gas Furnace
- Balancing dampers on all main supply runs
- High and low return air vents
- Rheem 13 Seer rated air conditioner
- Electronic programmable setback thermostat
- Zoned 1<sup>st</sup> and 2<sup>nd</sup> Floors
- Smoke detectors

## Exterior Details

- LP Smart Siding
- LP Smart Board Trim
- Aluminum Soffit and Fascia
- Storm doors included
- Seamless Aluminum Gutters
- Stone Veneer
- Covered Porch
- Screen Porch

## Plumbing

- Kohler brand plumbing fixtures throughout
- Standard Kohler colors included
- Master Bath Tile Shower
- Soaking Tub
- Pex Water lines and Manifold System
- 3 frost-proof hose bibs
- Garbage disposal and dishwasher installation
- Water line for icemaker
- Gas to range and dryer
- Coralais or Fairfax Faucets in brushed Nickel
- 75gal Powervent Water Heater
- Roughed in Lower Level Bath
- Sewer Lateral Allowance

## Additional services

- Free plan drafting and revisions
- No surcharge for changes during construction
- Guaranteed price contract
- Site meeting and home placement assistance
- Final cleanup prior to occupancy
- Web Based expediting
- You Deal Directly With The Owners